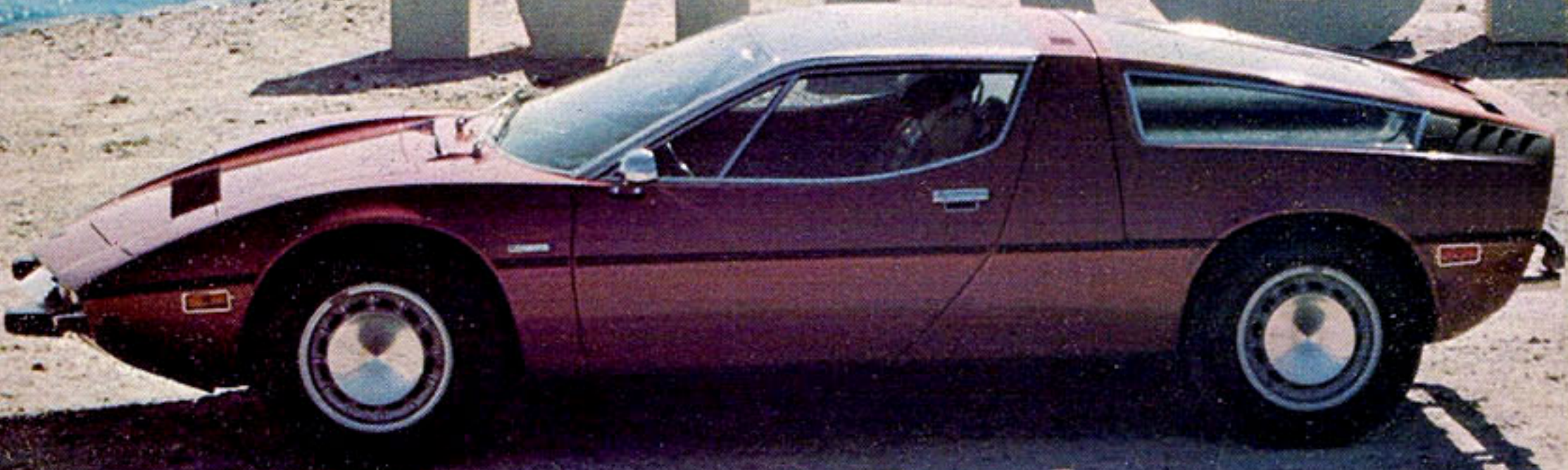




THE WIND & THE STAR

MASERATI



Bora — named for the cool, fierce Adriatic wind that blows from the north.

Merak — named for a star in the constellation Ursa Major, used to locate the North Star.

BORA

The ultimate expression of the Maserati mystique.

A legendary mystique that goes back more than sixty years. Based on Maserati's total and unrelenting commitment to excellence.

The forceful Bora design by Giugiaro of Ital Design is translated into metal, by hand, by craftsmen brought up in this very tradition.

The results are undeniable.

There are no mere seats in the Bora. But full-length, contoured body supports, hydraulically adjustable along with the foot pedals, to achieve unsurpassed driving comfort.

Power surges from the hand-built Maserati V-8 in an endless, velvet rush.

The engine is centrally-mounted, giving a sense of balance denied to cars of conventional manufacture.

Every discipline gained from racing goes into the four wheel independent suspension system that keeps each massive radial tire firmly planted on the road.

For performance and roadhandling, this automobile defies comparison.

This year, fewer than two hundred fifty people throughout the world will own a Bora.

They will be uncompromising individuals. With the means to be themselves.

They will be part of a legend.

They will ride the wind.





BORA SPECIFICATIONS

GRAN TURISMO: 2 passenger

BODY: Coupe Length: 177" (4495 mm) Width: 69.6" (1768 mm) Height: 44.6" (1134 mm)

ENGINE: V-8 (mid-engine) Bore: 3.7" (93.9 mm) Stroke: 3.5" (89 mm) Cubic Capacity: 300.8 cu. in. (4930 cc)

Hemispherical combustion chambers 4 overhead chain driven camshafts 4 dual throat Weber carburetors Max. Torque: 310 lb./ft. at 3500 r.p.m. Compression Ratio: 8.5:1

CLUTCH: Single dry plate with flexible coupling and hydraulic control

GEAR BOX: 5 speed synchromesh plus reverse

CHASSIS: Integral body chassis construction Wheelbase: 102.3" (2600 mm) Front Track: 58" (1474 mm) Rear Track: 56.9" (1447 mm)

SUSPENSION: Fully independent front and rear suspension by coil spring, torsion bar and telescopic dampers

BRAKES: Power assisted ventilated disc brakes on all 4 wheels Dual Master Cylinders Independent systems for each axle

STEERING: Rack and pinion with damping

FUEL TANK: Capacity: 25 U.S. gallons

AIR CONDITIONING: High efficiency unit with York compressor

WHEELS: Campagnolo light alloy—7½" x 15"

TIRES: Michelin 215/70 VR 15 XWX Radial

MAXIMUM SPEED: Approximately 170 m.p.h.

STANDARD EQUIPMENT: Air conditioning, English Connolly leather upholstery, power windows and antenna, tinted glass, speakers, adjustable steering wheel, hydraulically operated seats and foot pedal cluster, electric rear window defroster

OPTIONAL: Radio, tape deck

MERAK

Forged from the 60-year tradition that is Maserati, Merak is the newest and most affordable expression of that uncompromising desire to build and to be the absolute, unqualified, no-stone-unturned best.

Merak. Combining luxury, performance, and economy with a craftsmanship seemingly lost to today's world.

The Merak, with its graceful but aggressive flying buttress styling by Giugiaro of Ital Design is hand-crafted into a reality by Maserati artisans.

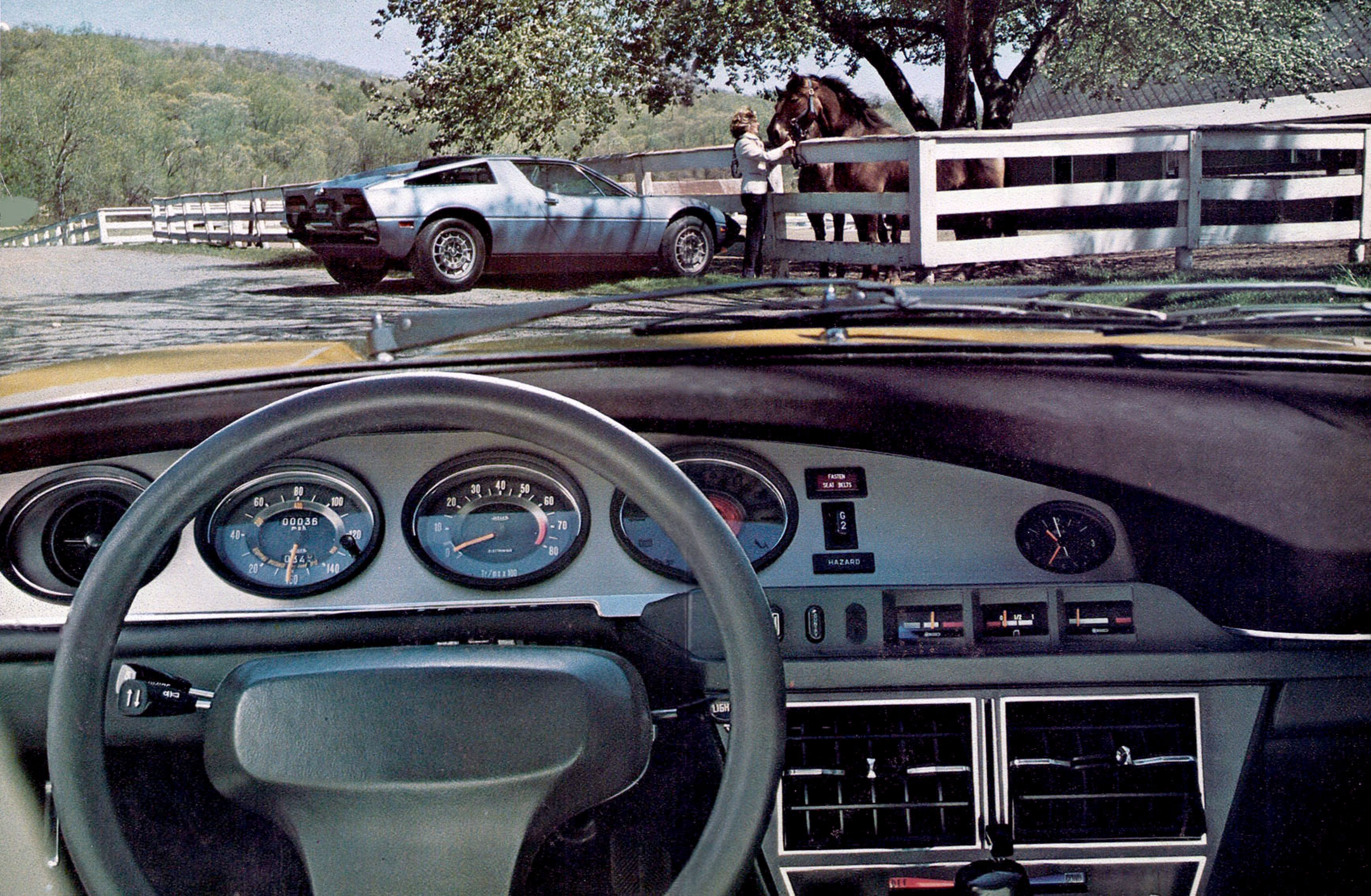
Everything from its deep, soft, genuine leather upholstery to the new V-6, four overhead cam engine that pulses strongly and smoothly from the center of the car is totally Maserati.

And while Merak's 5-speed transmission, 4-wheel independent suspension, ventilated disc brakes, and supremely stable mid-engine design all reflect the Maserati racing heritage, the Merak is among the most comfortable of cars, completely at ease in air-conditioned city driving.

Merak—a multifaceted star.

Is it the perfect automobile?

With a certain exception, we would agree.



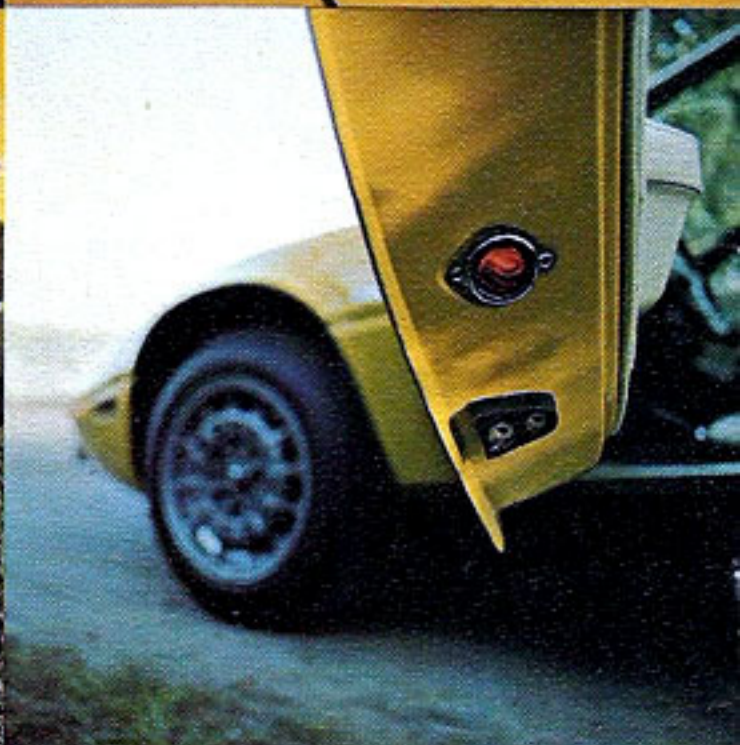
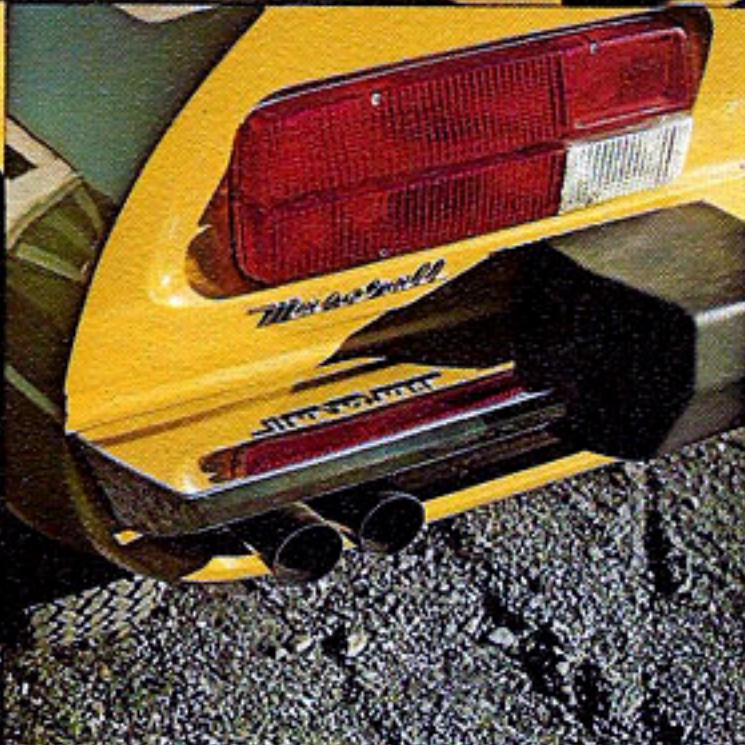
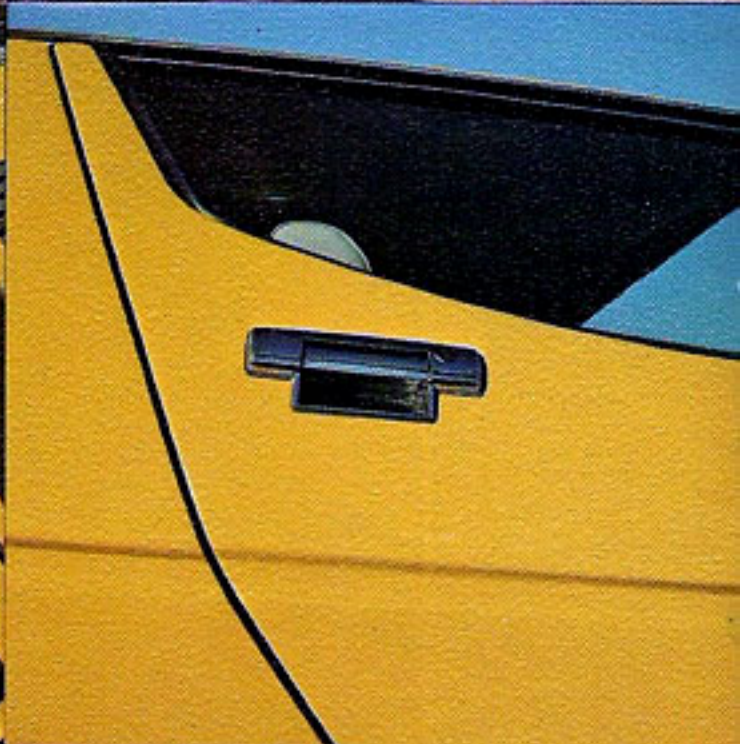
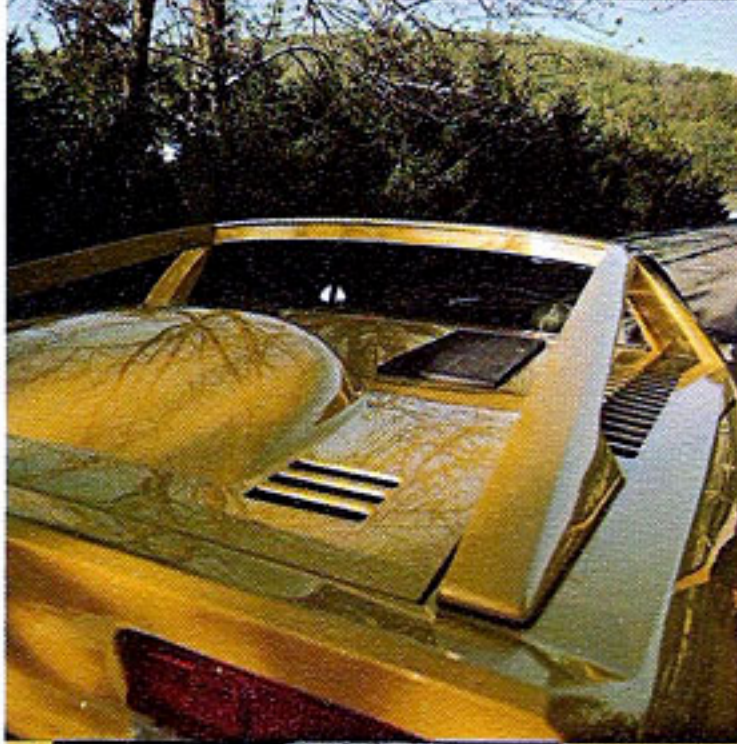
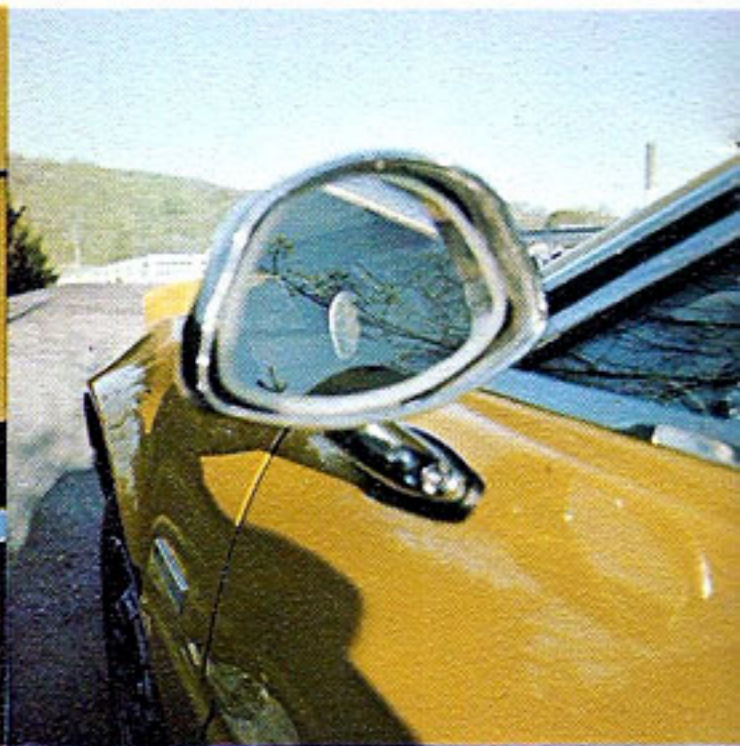
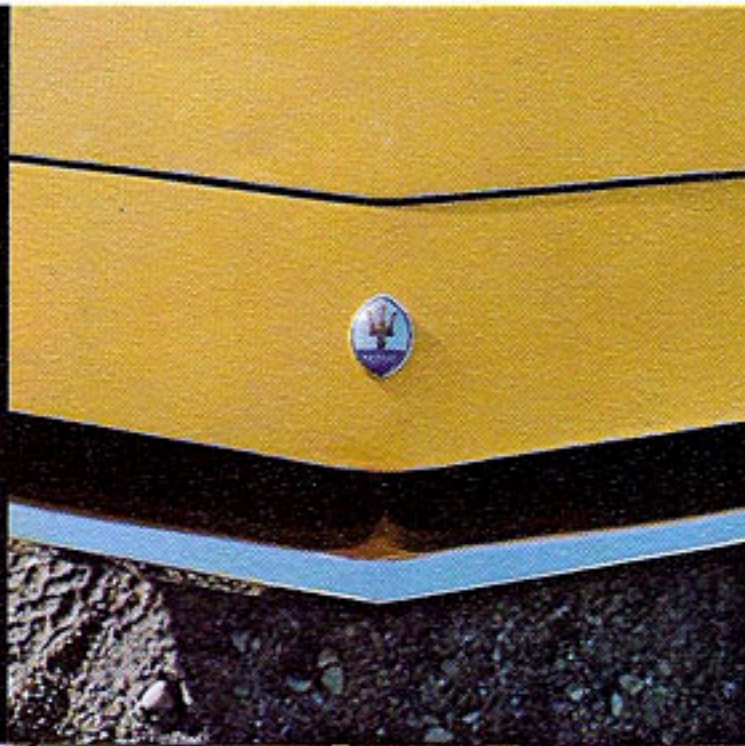
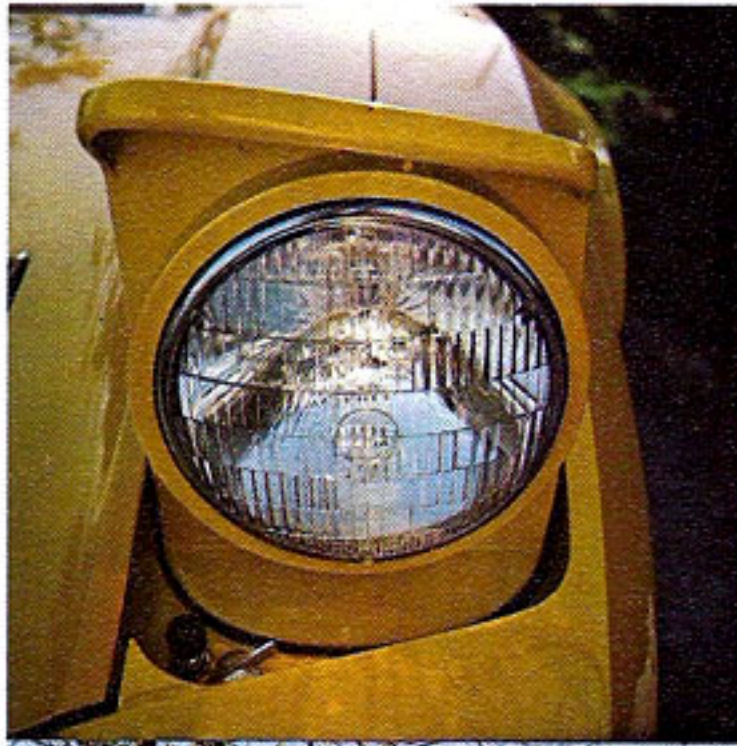
FASTEN
SEAT BELTS

G
2

HAZARD

0 1/2 1

0 1/2 1



MERAK SPECIFICATIONS

GRAN TURISMO: 2 passenger

BODY: Coupe. Length: 170" (4335 mm) Width: 69.6" (1768 mm) Height: 44.6" (1134 mm)

ENGINE: V-6 (mid-engine) Bore: 3.6" (91.6 mm) Stroke: 2.95" (75 mm) Cubic Displacement: 180.9 cu. in. (2965 cc) 4 overhead camshaft, 3 Weber carburetors. Maximum Torque: 185 lb. ft. at 3000 r.p.m. Compression ratio: 8.75 to 1 Water cooled

CLUTCH: Hydraulically operated diaphragm clutch

GEAR BOX: 5 speed synchromesh plus reverse

CHASSIS: Integral body chassis construction Wheelbase: 102.3" (2600 mm) Front Track: 58" (1474 mm) Rear Track: 56.9" (1447 mm)

SUSPENSION: Fully independent suspension with coil springs, torsion bar and telescopic dampers

BRAKES: Power assisted ventilated disc brakes on all 4 wheels Dual Master Cylinders Independent systems for each axle

STEERING: Rack and pinion with damping

FUEL TANK: Capacity: 23 U.S. gallons

WHEELS: 7.50 x 15 light alloy wheels

TIRES: Michelin steel belted radial

MAXIMUM SPEED: Approximately 149 m.p.h.

STANDARD EQUIPMENT: Air conditioning, leather upholstery, power windows and antenna, tinted glass, speakers, adjustable steering wheel, electric rear window defroster

OPTIONAL: Radio, tape deck



MASERATI AUTOMOBILES INCORPORATED

Sole importer for the United States
Subsidiary of Officine A. Maserati S.p.A., Modena, Italy

NATIONAL HEADQUARTERS

12615 Beatrice Street, Los Angeles, California 90066, (213) 390-3411
East: P.O. Box 9809, Englewood, New Jersey 07631, (201) 569-3733